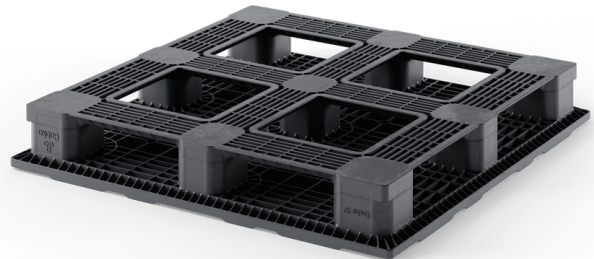




# B&G Industries, LLC

161 Chesterfield Industrial Blvd.  
St. Louis, MO 63005  
Phone: 636-532-5021  
Fax: 636-778-9313  
paul@bandgindustries.com

## Model # ENDUR S7 CD-6R 48x48 Stackable / Rackable Pallet



Dimensions: 47.2" x 47.2" x 6.5"

Material: PP

Weight: 64 lbs.

Entry: 4-way

Color: Black

Bottom: 6 runners

Load Capacities:

Static: 11,000 lbs.

Dynamic: 5,500 lbs.

Racking: 3,000 lbs.

Safety Rim: 0.3"

Truckload Quantity: 416 Pallets

40' HC Container: 270 pallets

- Robust pallet designed with the special size 1200 x 1200 mm
- Ideal for high-rotation usage such as open or closed pools
- Excellent transport for six modular units (600 x 400 mm) per layer
- Big bags (FIBC) can be handled and stored in racks safely
- Suitable for block stacking
- Various anti-slip options are available
- Reusable pallet made of recycled plastic and 100% recyclable

### Options

Safety rims

Anti-slip strips on deck and grommets under deck

RFID transponders and other IoT options

Specific colors on request

Individual marking and labeling

ESD prevention: conductive and anti-static

Further bottom version: 3 runners

Also available with open deck